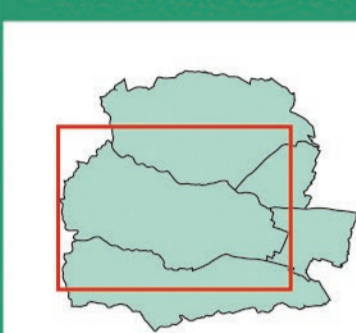


Komono Town Disaster Prevention Map

Chikusa District

Entire Komono Town



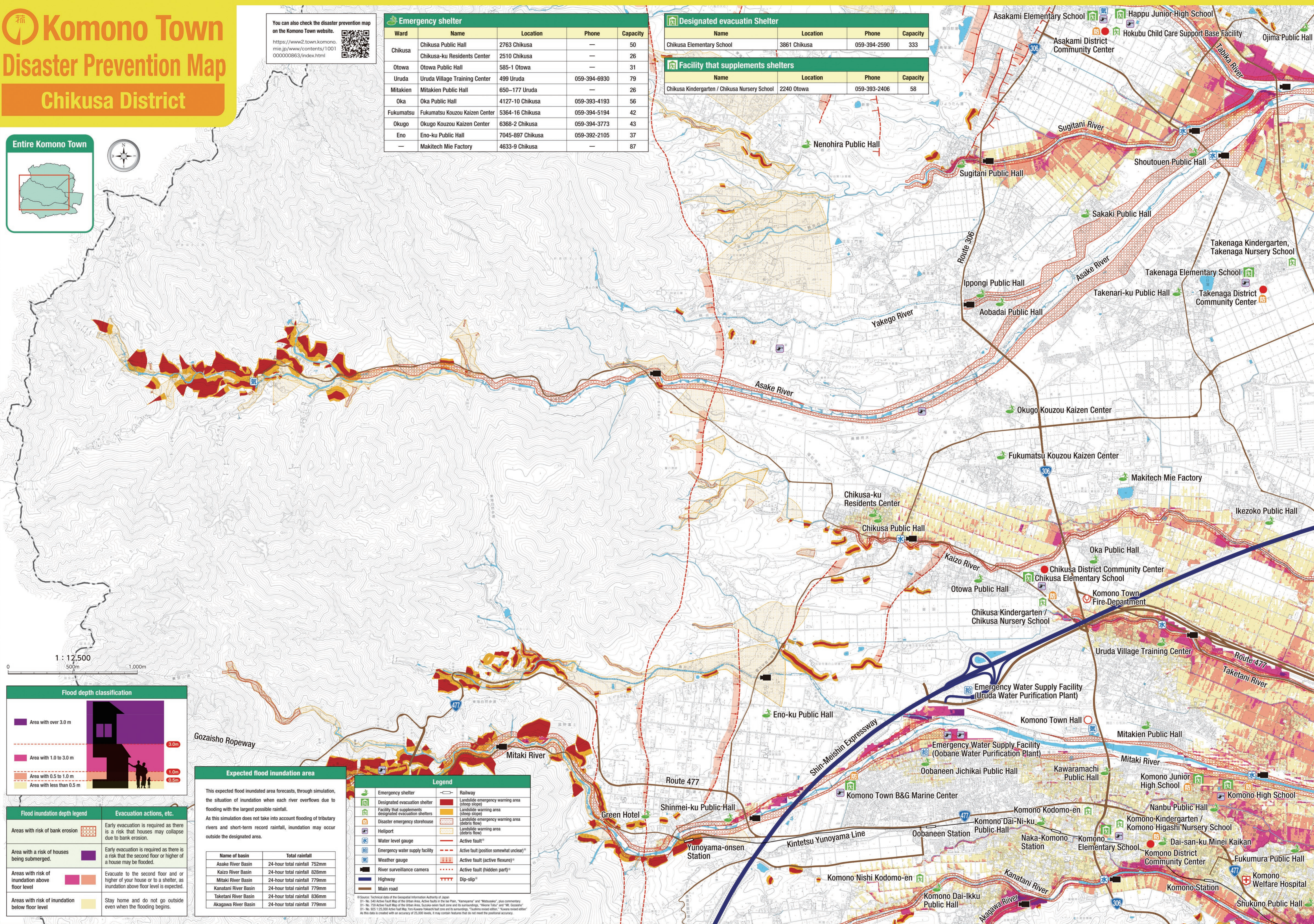
You can also check the disaster prevention map on the Komono Town website.
<https://www2.town.komono.mie.jp/www/contents/100100000863/index.html>



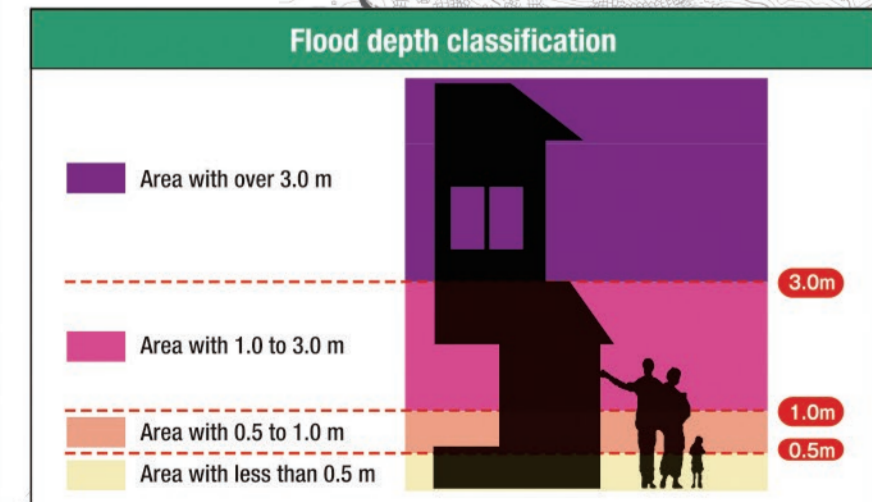
Emergency shelter				
Ward	Name	Location	Phone	Capacity
Chikusa	Chikusa Public Hall	2763 Chikusa	—	50
	Chikusa-ku Residents Center	2510 Chikusa	—	26
Otowa	Otowa Public Hall	585-1 Otowa	—	31
Uruda	Uruda Village Training Center	499 Uruda	059-394-6930	79
Mitakien	Mitakien Public Hall	650-177 Uruda	—	26
Oka	Oka Public Hall	4127-10 Chikusa	059-393-4193	56
Fukumatsu	Fukumatsu Kouzou Kaizen Center	5364-16 Chikusa	059-394-5194	42
Okugo	Okugo Kouzou Kaizen Center	6368-2 Chikusa	059-394-3773	43
Eno	Eno-ku Public Hall	7045-897 Chikusa	059-392-2105	37
—	Makitech Mie Factory	4633-9 Chikusa	—	87

Designated evacuatn Shelter			
Name	Location	Phone	Capacity
Chikusa Elementary School	3861 Chikusa	059-394-2590	333

Facility that supplements shelters			
Name	Location	Phone	Capacity
Chikusa Kindergarten / Chikusa Nursery School	2240 Otowa	059-393-2406	58



1 : 12,500
0 500m 1,000m



Flood inundation depth legend	Evacuation actions, etc.
Areas with risk of bank erosion	Early evacuation is required as there is a risk that houses may collapse due to bank erosion.
Area with a risk of houses being submerged.	Early evacuation is required as there is a risk that the second floor or higher of a house may be flooded.
Areas with risk of inundation above floor level	Evacuate to the second floor or higher of your house or to a shelter, as inundation above floor level is expected.
Areas with risk of inundation below floor level	Stay home and do not go outside even when the flooding begins.

Expected flood inundation area

This expected flood inundated area forecasts, through simulation, the situation of inundation when each river overflows due to flooding with the largest possible rainfall.

As this simulation does not take into account flooding of tributary rivers and short-term record rainfall, inundation may occur outside the designated area.

Name of basin	Total rainfall
Asake River Basin	24-hour total rainfall 752mm
Kaizo River Basin	24-hour total rainfall 828mm
Mitaki River Basin	24-hour total rainfall 779mm
Kanatani River Basin	24-hour total rainfall 779mm
Taketani River Basin	24-hour total rainfall 836mm
Akagawa River Basin	24-hour total rainfall 779mm

Legend	
Emergency shelter	Landslide emergency warning area (steep slope)
Designated evacuation shelter	Landslide warning area (strong slope)
Facility that supplements designated evacuation shelters	Landslide emergency warning area (debris flow)
Disaster emergency storehouse	Landslide warning area (debris flow)
Helipoint	Active fault*
Water level gauge	Active fault (position somewhat unclear)*
Emergency water supply facility	Active fault (active flexure)*
Weather gauge	Active fault (hidden part)*
River surveillance camera	Dip-slip*
Highway	
Main road	

© Source: Technical data of the Geospatial Information Authority of Japan
D1: No. 140 Active Fault Map of the Urban Area, Active Faults in the "San" Plan, "Kansai" and "Matsuyama", plus commentary
D1: No. 759 Active Fault Map of the Urban Area, Active Faults in the "San" Plan, "Kansai" and "Matsuyama", plus commentary
D1: No. 823 1:25,000 Active Fault Map, Topographic Active Fault Map and its surroundings, "Kansai" and "Matsuyama", plus commentary
As the data is created with an accuracy of 50,000 levels, it may contain features that do not meet the positional accuracy.