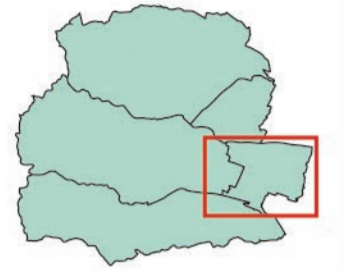


# Komono Town Disaster Prevention Map

## Ugawara District

### Entire Komono Town



Legend	
Emergency shelter	Landslide emergency warning area (steep slope)
Designated evacuation shelter	Landslide warning area (steep slope)
Facility that supplements designated evacuation shelters	Landslide emergency warning area (debris flow)
Disaster emergency storehouse	Landslide warning area (debris flow)
Heliport	Active fault*
Water level gauge	Active fault (position somewhat unclear)**
Emergency water supply facility	Active fault (active flexure)**
Weather gauge	Active fault (hidden part)**
River surveillance camera	Dip-slip**
Highway	
Main road	
Railway	

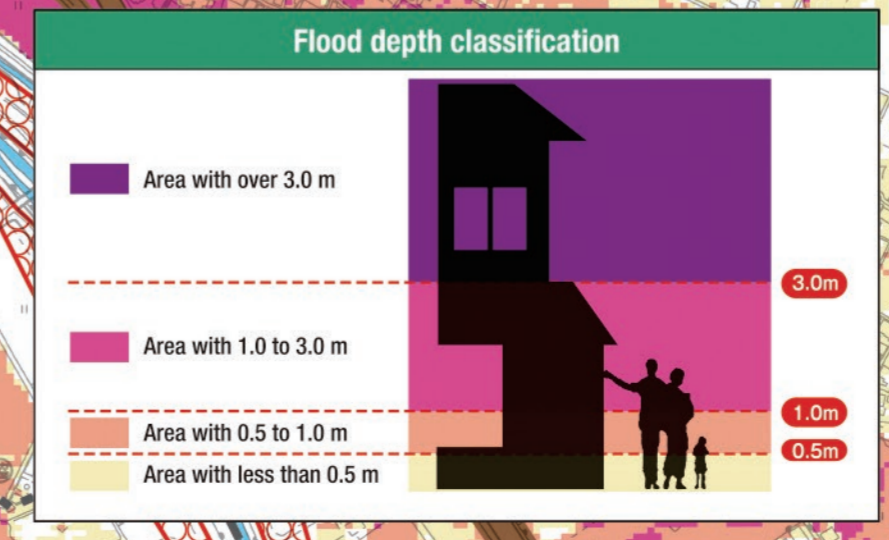
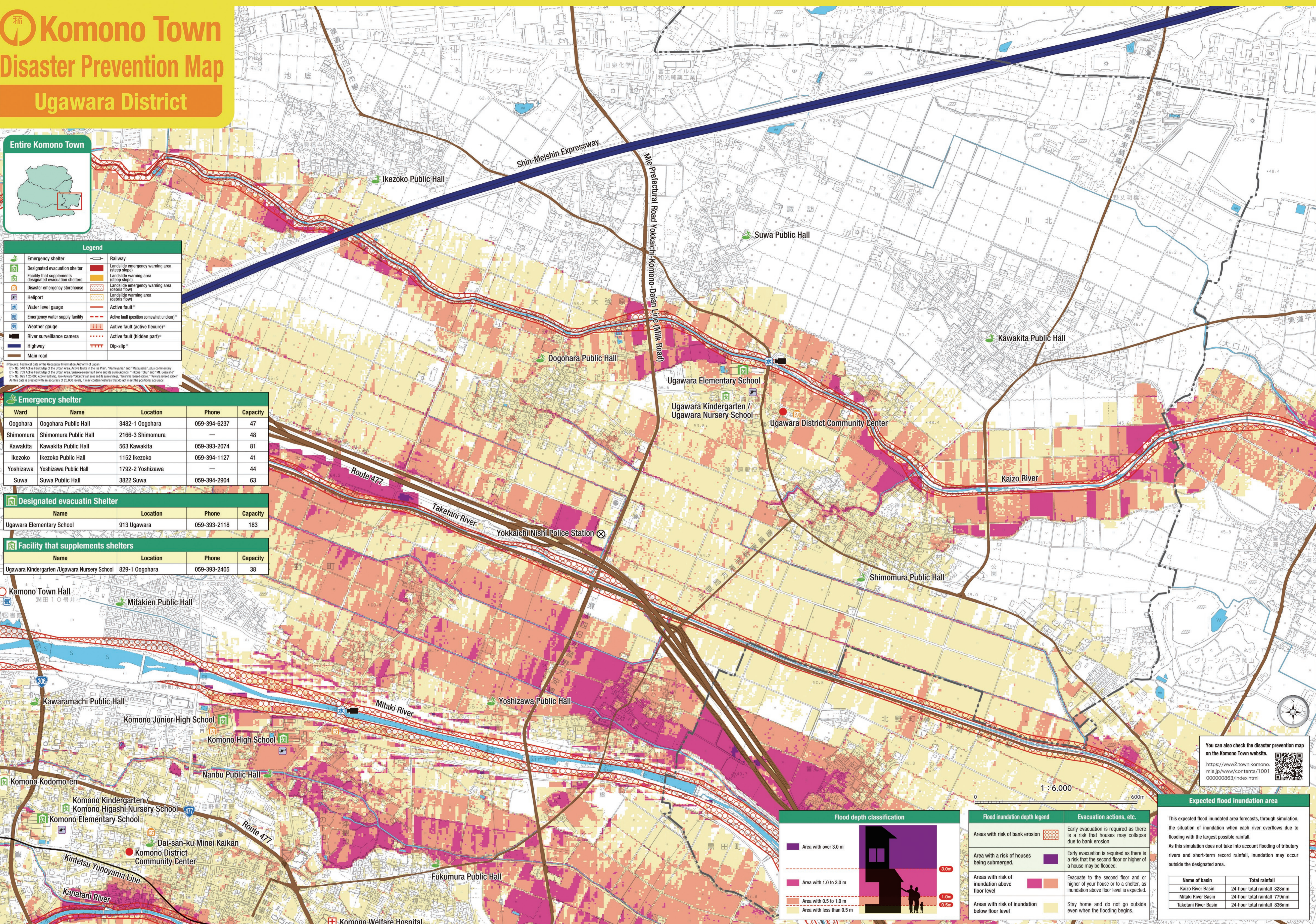
\*Source: Technical data of the Geospatial Information Authority of Japan.  
 01- No. 548 Active Fault Map of the Urban Area, Active faults in the Ina Plain, "Komeyama" and "Mitsusaki", plus commentary.  
 01- No. 759 Active Fault Map of the Urban Area, Scarce active fault zones and its surroundings, "Hosoya Taki" and "Mi. Ozasaka".  
 01- No. 105 1:25,000 Active Fault Map, Yoro-Kawana-Yokkaichi fault zone and its surroundings, "Tsushima river" edition, "Yama river" edition.  
 As this data is created with an accuracy of 25,000 levels, it may contain features that do not meet the positional accuracy.

Emergency shelter				
Ward	Name	Location	Phone	Capacity
Oogohara	Oogohara Public Hall	3482-1 Oogohara	059-394-6237	47
Shimomura	Shimomura Public Hall	2166-3 Shimomura	—	48
Kawakita	Kawakita Public Hall	563 Kawakita	059-393-2074	81
Ikezoko	Ikezoko Public Hall	1152 Ikezoko	059-394-1127	41
Yoshizawa	Yoshizawa Public Hall	1792-2 Yoshizawa	—	44
Suwa	Suwa Public Hall	3822 Suwa	059-394-2904	63

Designated evacuation Shelter			
Name	Location	Phone	Capacity
Ugawara Elementary School	913 Ugawara	059-393-2118	183

Facility that supplements shelters			
Name	Location	Phone	Capacity
Ugawara Kindergarten / Ugawara Nursery School	829-1 Oogohara	059-393-2405	38

Komono Town Hall			
Name	Location	Phone	Capacity
Komono Town Hall	1-1-1 Komono	059-393-1111	—
Mitakien Public Hall	1-1-1 Mitaki	059-393-1111	—
Kawaramachi Public Hall	1-1-1 Kawaramachi	059-393-1111	—
Komono Junior High School	1-1-1 Komono	059-393-1111	—
Komono High School	1-1-1 Komono	059-393-1111	—
Nanbu Public Hall	1-1-1 Nanbu	059-393-1111	—
Komono Kodomo-en	1-1-1 Komono	059-393-1111	—
Komono Kindergarten / Komono Higashi Nursery School	1-1-1 Komono	059-393-1111	—
Komono Elementary School	1-1-1 Komono	059-393-1111	—
Dai-san-ku Minei Kaikan	1-1-1 Komono	059-393-1111	—
Komono District Community Center	1-1-1 Komono	059-393-1111	—
Fukumura Public Hall	1-1-1 Komono	059-393-1111	—
Komono Welfare Hospital	1-1-1 Komono	059-393-1111	—



Flood inundation depth legend	Evacuation actions, etc.
Areas with risk of bank erosion	Early evacuation is required as there is a risk that houses may collapse due to bank erosion.
Area with a risk of houses being submerged	Early evacuation is required as there is a risk that the second floor or higher of a house may be flooded.
Areas with risk of inundation above floor level	Evacuate to the second floor or higher of your house or to a shelter, as inundation above floor level is expected.
Areas with risk of inundation below floor level	Stay home and do not go outside even when the flooding begins.

### Expected flood inundation area

This expected flood inundated area forecasts, through simulation, the situation of inundation when each river overflows due to flooding with the largest possible rainfall. As this simulation does not take into account flooding of tributary rivers and short-term record rainfall, inundation may occur outside the designated area.

Name of basin	Total rainfall
Kaizo River Basin	24-hour total rainfall: 828mm
Mitaki River Basin	24-hour total rainfall: 779mm
Taketani River Basin	24-hour total rainfall: 636mm

You can also check the disaster prevention map on the Komono Town website.  
<https://www2.town.komono.mie.jp/www/contents/100100000863/index.html>

This map has been adapted using the "2017 Mie Prefecture Shared Digital Map (miniature copy of numerical topographic map 10,000)" under the jurisdiction of the Mie Shichosogojimu/Kumiai Mie Prefecture Municipal General Affairs Association with the approval of its manager. (Approval number: No. 103) If you reproduce or use this map to adjust another map, you will need approval from the Association.