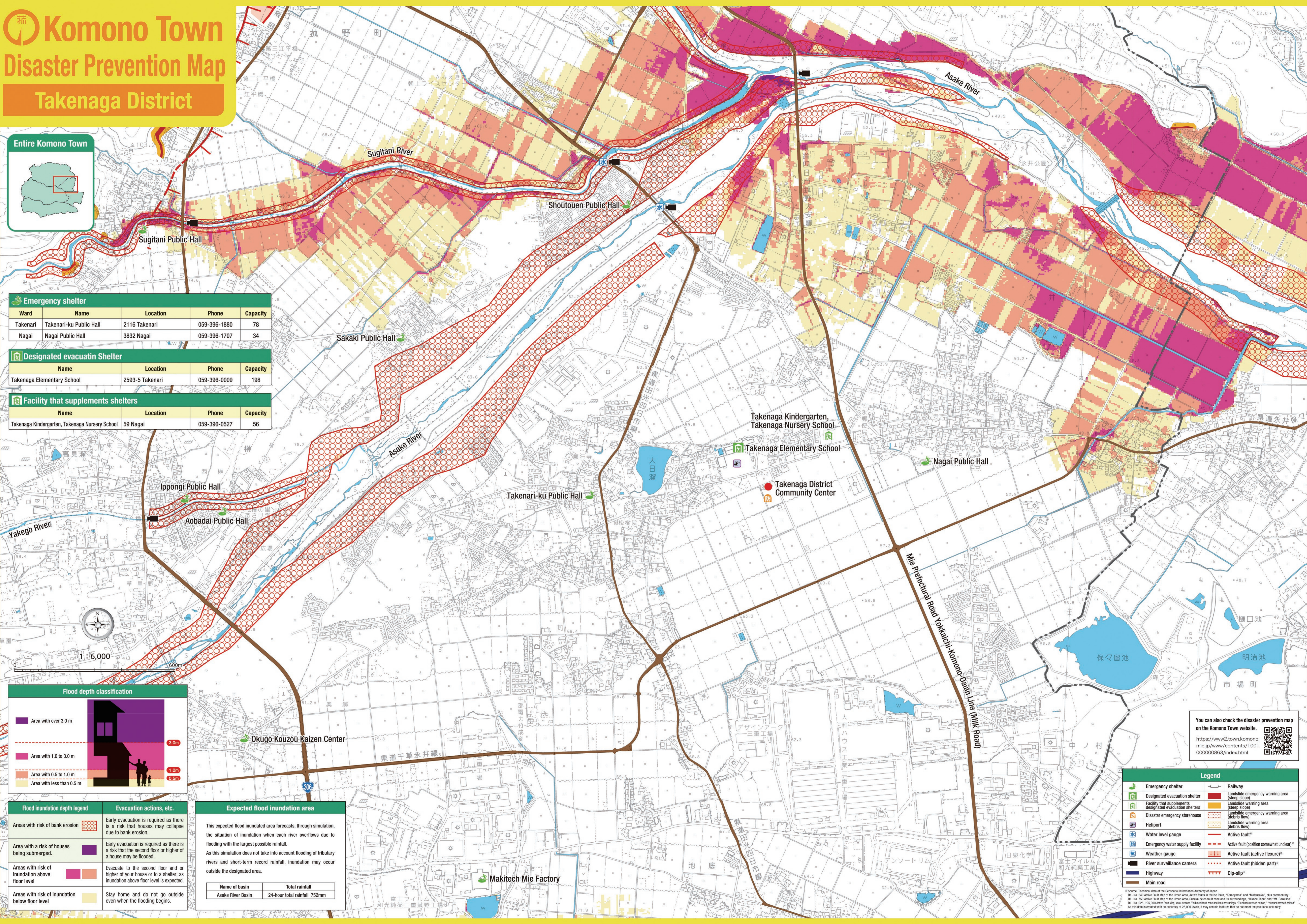


Komono Town Disaster Prevention Map

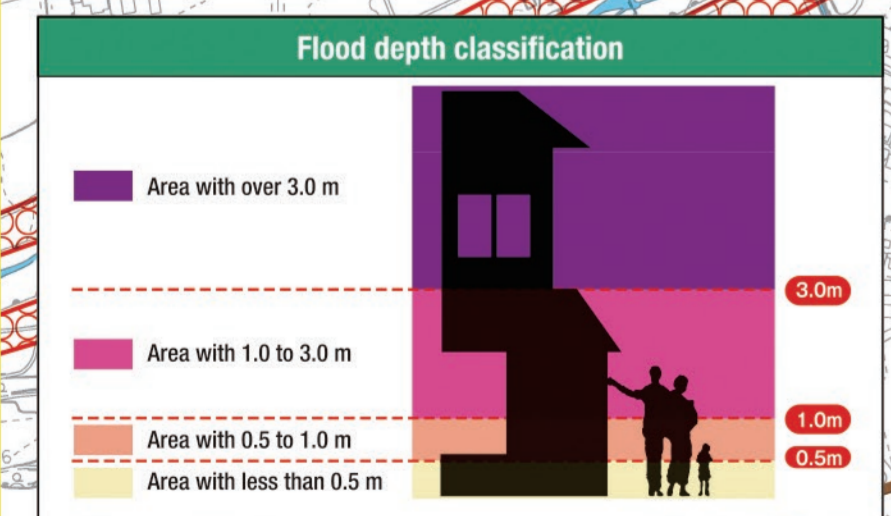
Takenaga District



Emergency shelter				
Ward	Name	Location	Phone	Capacity
Takenari	Takenari-ku Public Hall	2116 Takenari	059-396-1880	78
Nagai	Nagai Public Hall	3832 Nagai	059-396-1707	34

Designated evacuation Shelter				
Name	Location	Phone	Capacity	
Takenaga Elementary School	2593-5 Takenari	059-396-0009	198	

Facility that supplements shelters				
Name	Location	Phone	Capacity	
Takenaga Kindergarten, Takenaga Nursery School	59 Nagai	059-396-0527	56	



Flood inundation depth legend	Evacuation actions, etc.
Areas with risk of bank erosion	Early evacuation is required as there is a risk that houses may collapse due to bank erosion.
Area with a risk of houses being submerged	Early evacuation is required as there is a risk that the second floor or higher of a house may be flooded.
Areas with risk of inundation above floor level	Evacuate to the second floor or higher of your house or to a shelter, as inundation above floor level is expected.
Areas with risk of inundation below floor level	Stay home and do not go outside even when the flooding begins.

Expected flood inundation area	
This expected flood inundated area forecasts, through simulation, the situation of inundation when each river overflows due to flooding with the largest possible rainfall.	
As this simulation does not take into account flooding of tributary rivers and short-term record rainfall, inundation may occur outside the designated area.	
Name of basin	Total rainfall
Asake River Basin	24-hour total rainfall 752mm

Legend	
	Emergency shelter
	Designated evacuation shelter
	Facility that supplements designated evacuation shelters
	Disaster emergency storeroom
	Heliport
	Water level gauge
	Emergency water supply facility
	Weather gauge
	River surveillance camera
	Highway
	Main road
	Railway
	Landslide emergency warning area (steep slope)
	Landslide warning area (steep slope)
	Landslide emergency warning area (debris flow)
	Landslide warning area (debris flow)
	Landslide emergency warning area (hidden part)
	Landslide warning area (hidden part)
	Active fault
	Active fault (position somewhat unclear)
	Active fault (active flexure)
	Active fault (hidden part)
	Dip-slip

You can also check the disaster prevention map on the Komono Town website.
<https://www2.town.komono.mie.jp/www/contents/1001000000863/index.html>



This map has been adapted using the '2017 Mie Prefecture Shared Digital Map (miniature copy of numerical topographic map 10,000)' under the jurisdiction of the Mie Shichosogijumu/Kumiai (Mie Prefecture Municipal General Affairs Association) with the approval of its manager. (Approval number: No. 103) If you reproduce or use this map to adjust another map, you will need approval from the Association.