

Komono Town Disaster Prevention Map

Komono District (West)

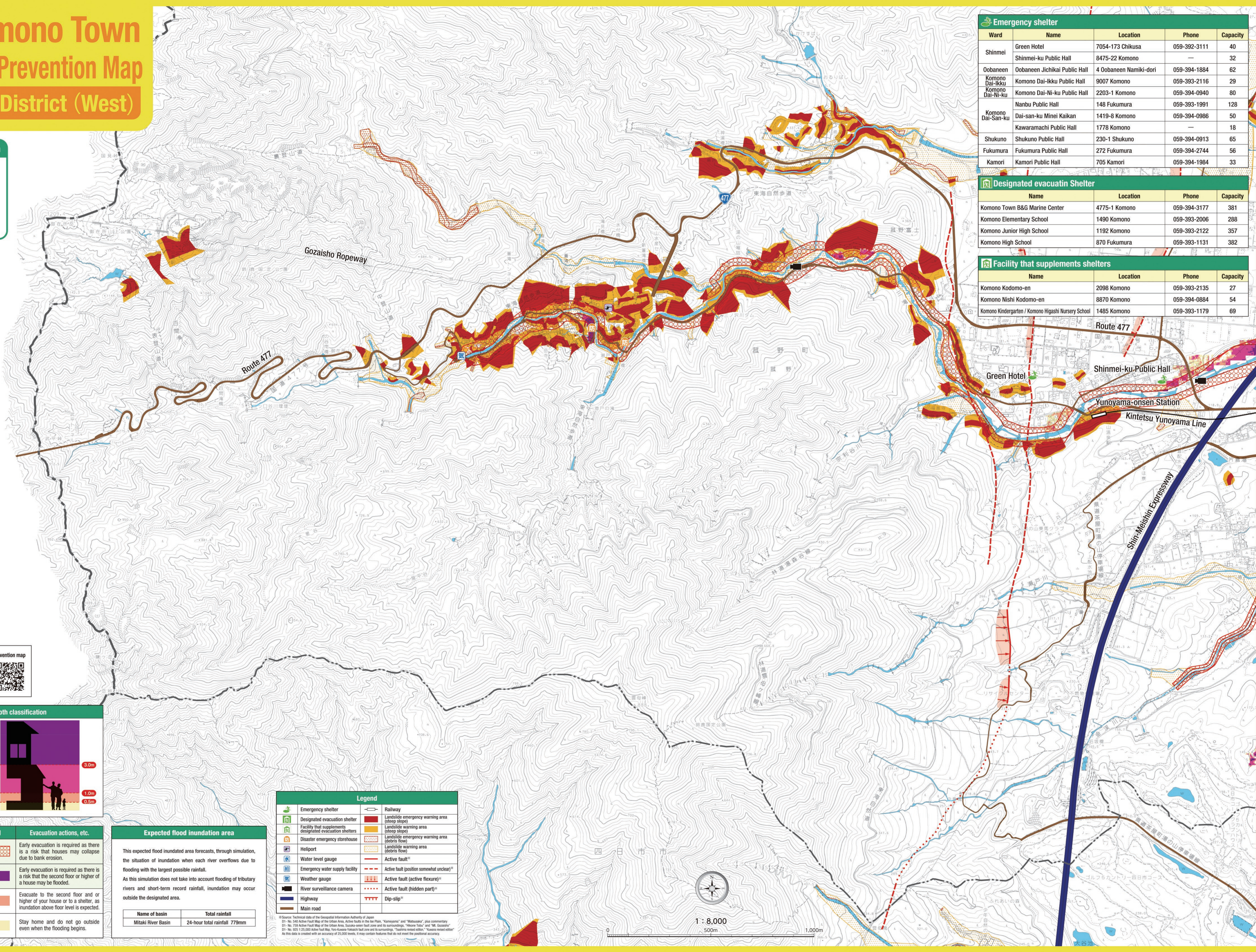
Entire Komono Town



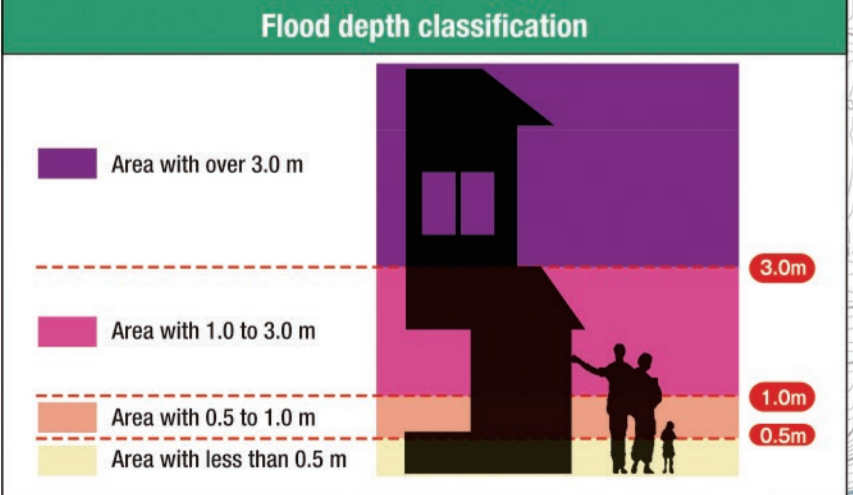
Emergency shelter				
Ward	Name	Location	Phone	Capacity
Shinmei	Green Hotel	7054-173 Chikusa	059-392-3111	40
	Shinmei-ku Public Hall	8475-22 Komono	—	32
Oobaneen	Oobaneen Jichikai Public Hall	4 Oobaneen Namiki-dori	059-394-1884	62
Komono Dai-Ikku	Komono Dai-Ikku Public Hall	9007 Komono	059-393-2116	29
Komono Dai-Ni-ku	Komono Dai-Ni-ku Public Hall	2203-1 Komono	059-394-0940	80
	Nanbu Public Hall	148 Fukumura	059-393-1991	128
Komono Dai-San-ku	Dai-san-ku Minei Kaikan	1419-8 Komono	059-394-0986	50
	Kawaramachi Public Hall	1778 Komono	—	18
Shukuno	Shukuno Public Hall	230-1 Shukuno	059-394-0913	65
Fukumura	Fukumura Public Hall	272 Fukumura	059-394-2744	56
Kamori	Kamori Public Hall	705 Kamori	059-394-1984	33

Designated evacuation Shelter			
Name	Location	Phone	Capacity
Komono Town B&G Marine Center	4775-1 Komono	059-394-3177	381
Komono Elementary School	1490 Komono	059-393-2006	288
Komono Junior High School	1192 Komono	059-393-2122	357
Komono High School	870 Fukumura	059-393-1131	382

Facility that supplements shelters			
Name	Location	Phone	Capacity
Komono Kodomo-en	2098 Komono	059-393-2135	27
Komono Nishi Kodomo-en	8870 Komono	059-394-0884	54
Komono Kindergarten / Komono Higashi Nursery School	1485 Komono	059-393-1179	69



You can also check the disaster prevention map on the Komono Town website.
<https://www2.town.komono.mie.jp/www/contents/100100000863/index.html>



Flood inundation depth legend	Evacuation actions, etc.
Areas with risk of bank erosion	Early evacuation is required as there is a risk that houses may collapse due to bank erosion.
Area with a risk of houses being submerged	Early evacuation is required as there is a risk that the second floor or higher of a house may be flooded.
Areas with risk of inundation above floor level	Evacuate to the second floor or higher of your house or to a shelter, as inundation above floor level is expected.
Areas with risk of inundation below floor level	Stay home and do not go outside even when the flooding begins.

Expected flood inundation area	
This expected flood inundated area forecasts, through simulation, the situation of inundation when each river overflows due to flooding with the largest possible rainfall.	
As this simulation does not take into account flooding of tributary rivers and short-term record rainfall, inundation may occur outside the designated area.	
Name of basin	Total rainfall
Mitaki River Basin	24-hour total rainfall 779mm

Legend	
Emergency shelter	Railway
Designated evacuation shelter	Landslide emergency warning area (steep slope)
Facility that supplements designated evacuation shelters	Landslide warning area (steep slope)
Disaster emergency storehouse	Landslide emergency warning area (debris flow)
Heliport	Landslide warning area (debris flow)
Water level gauge	Active fault*
Emergency water supply facility	Active fault (position somewhat unclear)*
Weather gauge	Active fault (active flexure)*
River surveillance camera	Active fault (hidden part)*
Highway	Dip-slip**
Main road	

*Source: Technical data of the Geospatial Information Authority of Japan
 01: No. 546 Active Fault Map of the Urban Area, Active faults in the Ina Plain, "Kawajima" and "Mitsunaka", plus commentary
 01: No. 739 Active Fault Map of the Urban Area, Sanuki-senri fault zone and its surroundings, "Hikone Tobei" and "MI, Gassaiho"
 01: No. 825 "25,000 Active Fault Map, Ten-Kawara-Hakushi fault zone and its surroundings, "Shikoku raised water", "Kawara raised water"
 As this data is created with an accuracy of 25,000 levels, it may contain features that do not meet the positional accuracy.

