

Method for transmitting emergency information (disaster occurrence, evacuation, etc.)

Komono Town Disaster Prevention Radio CTY FM 76.8MHz

When emergency information is announced, the power will automatically turn on and the announcement will be broadcast at maximum volume. We distribute one unit free of charge to each household.

Emergency early warning emails (Area emails)

When emergency information is announced, you will be notified on your mobile phone with a dedicated screen and a dedicated ringtone. Registration is unnecessary.

Komono Town administrative information email

Details such as emergency information, weather information, seismic intensity information, etc. will be sent by email. Pre-registration is required. For registration, please send an email to t-komono@sg-p.jp and follow the instructions in the reply email.

How to check wind speed, precipitation, water level, etc.

Town's weather measuring unit **POTEKA NET**
<http://www.potekanet.com/>



Information from weather measuring units installed in the town
 Temperature, humidity, atmospheric pressure, wind, solar insolation, precipitation, etc

River water level **River water level information** (Ministry of Land, Infrastructure, Transport and Tourism)
<https://k.river.go.jp/>



Information from the water level gauge installed in the town

River surveillance camera **CTY information camera**
<https://www.cty-net.ne.jp/>

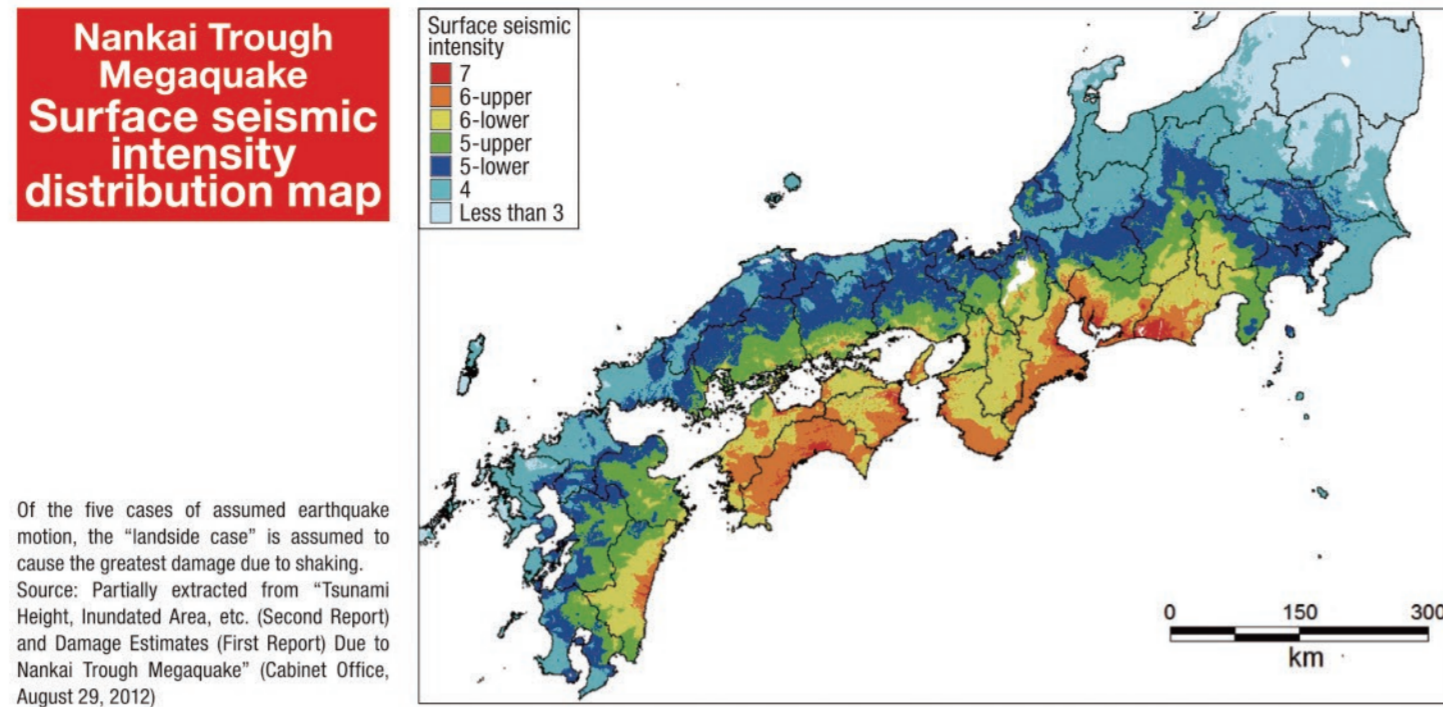


Information, etc. from river surveillance cameras installed at 19 points along rivers in the town

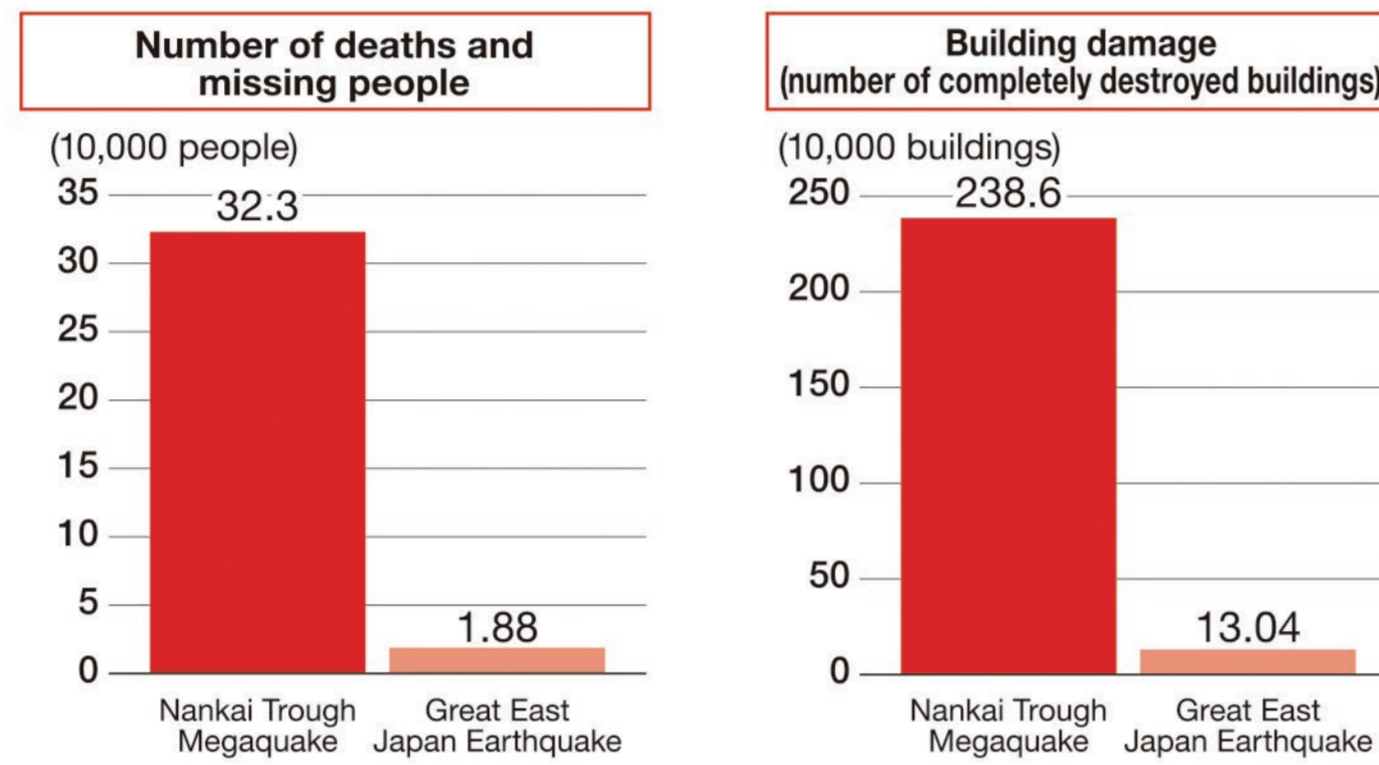
Issued by Komono Town Section in charge: Safety and Security Office, General Affairs Division
 March 2023 Phone: 059-391-1102 Fax: 059-394-3199

Nankai Trough Earthquake

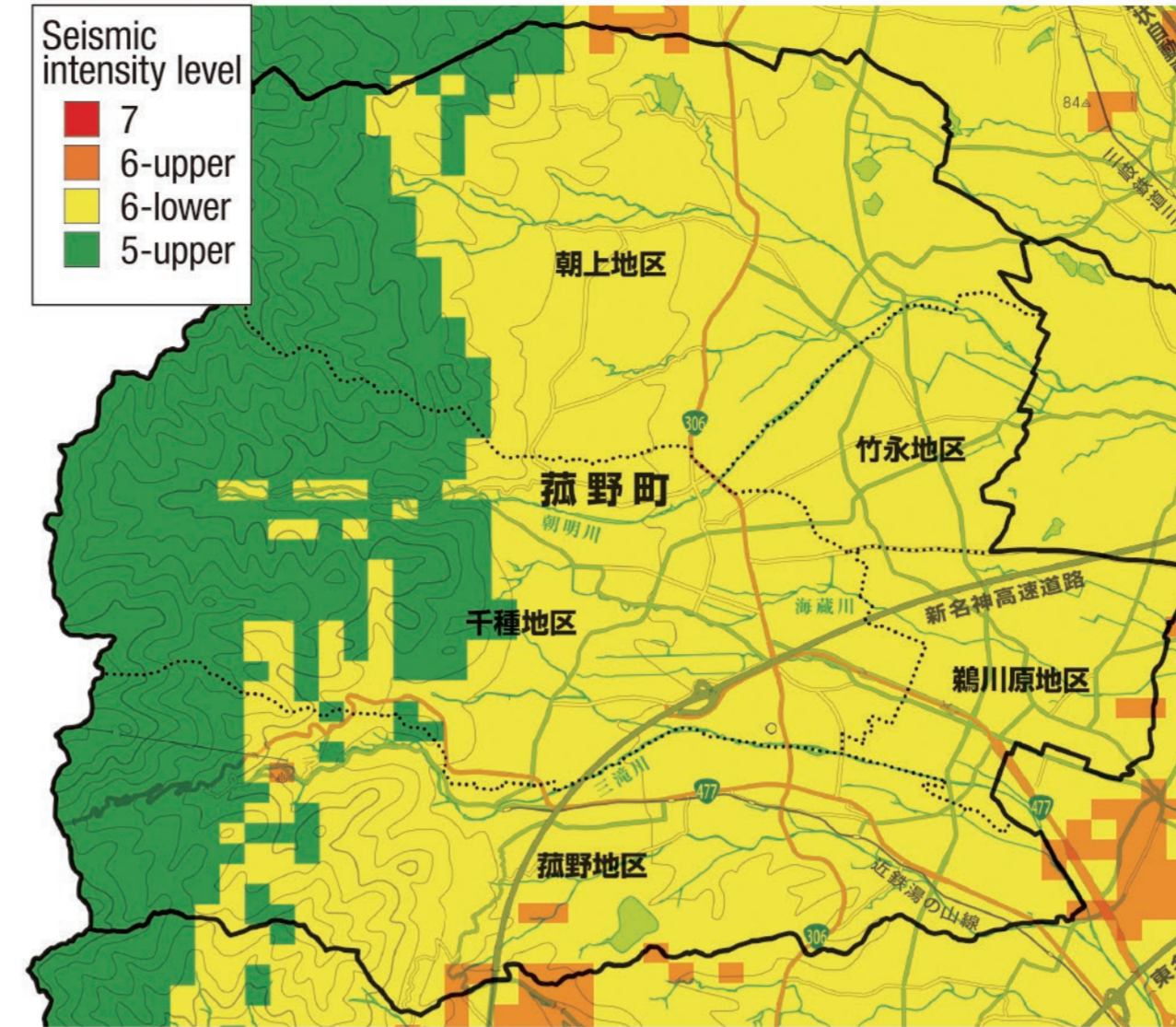
The Nankai Trough Megaquake, which is assumed to have a magnitude of 9.0, is expected to cause about 323,000 deaths and missing people in 30 prefectures, and about 2,386,000 buildings will be completely destroyed in the severest case.



Comparison of the Nankai Trough Megaquake and the Great East Japan Earthquake



Earthquakes with a seismic intensity of 6 occurred throughout almost the whole town.

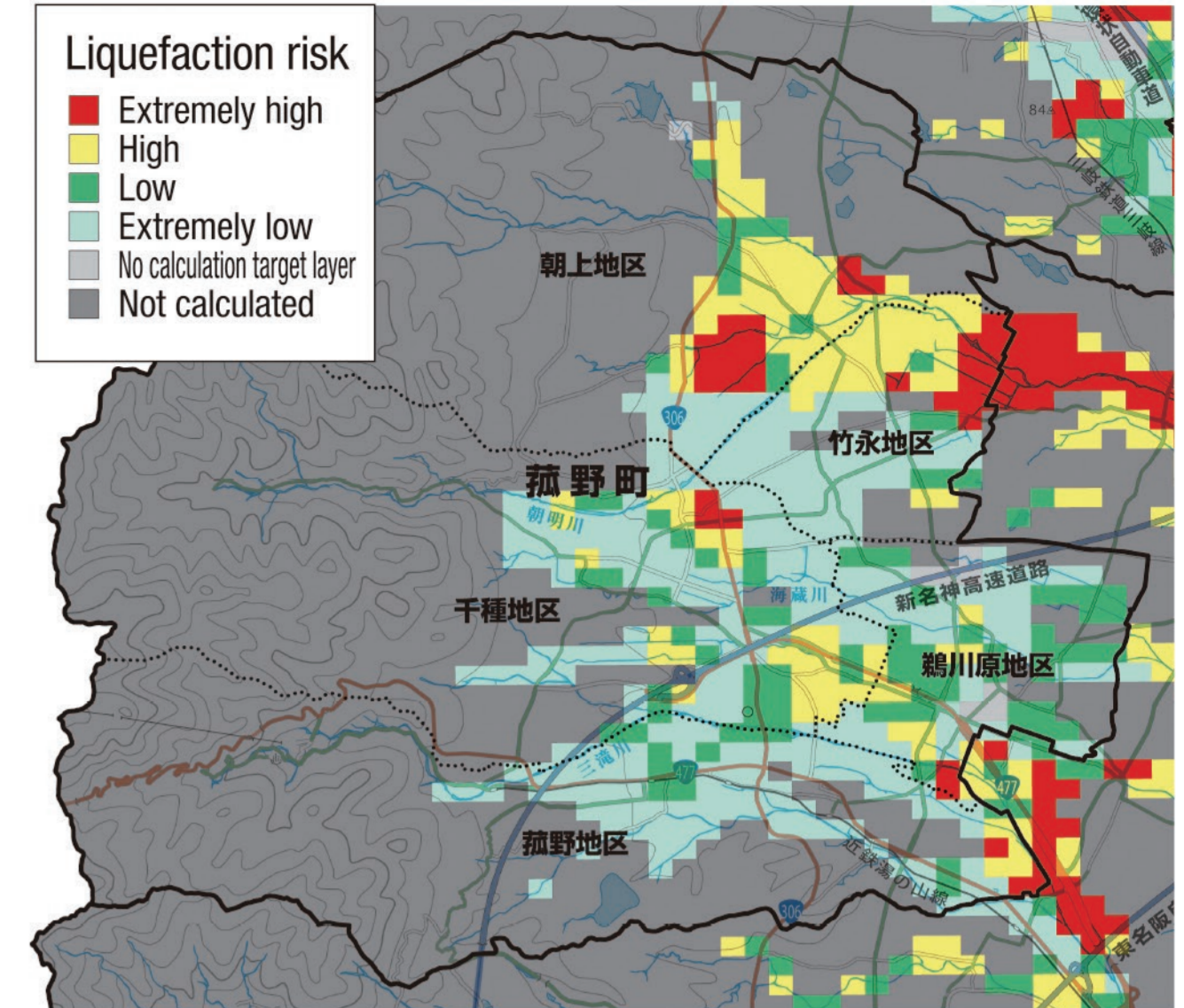


Level	Human perception	Effects on wooden buildings	Level	Human perception	Effects on wooden buildings
7	Being tossed about by the tremors, you cannot act according to your own intention.	Even houses with high earthquake resistance are severely damaged or tilted.	6-lower	It is difficult to remain standing.	Some houses with low earthquake resistance collapse, and even some houses with high earthquake resistance suffer damage to walls and pillars.
6-upper	It is impossible to remain standing and move without crawling.	Many houses with low earthquake resistance collapse, and even houses with high earthquake resistance suffer considerable damage to walls and pillars.	5-upper	Many people are badly frightened and find it hard to move.	Some houses with low earthquake resistance suffer considerable damage to walls and pillars or tilt.

Estimated damage to Komono Town due to the Nankai Trough Earthquake

- Death toll: approximately 20 people
- Seriously injured: approximately 50 people
- Completely destroyed buildings: approximately 600
- Electricity, water supply and sewerage, telephone: almost unusable

Liquefaction risk prediction distribution map



When a large earthquake occurs

1. Protect yourself
2. Confirm the safety of your family
3. Turn off any fires and the circuit breaker
4. Confirm the safety of neighbors
5. Carry out firefighting and rescue operations in the community
6. Return home if there is no damage to your home
 If your home is damaged, evacuate to a nearby designated evacuation shelters or emergency shelter.

Landslide Disasters (Landslides, Debris Flows)

Fragile geology of Komono Town Granite



Most of the mountainous areas in the town are fragile geological formations mainly composed of easily crumbling granite. When granite weathers, it becomes a mixture of soil called "decomposed granite soil" and unweathered megaliths (core stones), which are prone to landslides due to rain.

480 dangerous areas in town

Landslide Emergency Warning Area

Areas where there is a risk of the entire house being destroyed by earth and sand, rocks, or driftwood



Landslide Warning Area

Areas where there is a risk of being reached by earth and sand, rocks, and driftwood



Please see the following websites for landslide warning areas, etc.

Mie Prefecture Website
https://www.pref.mie.lg.jp/HOZEN/HP/06770006284_00003.htm

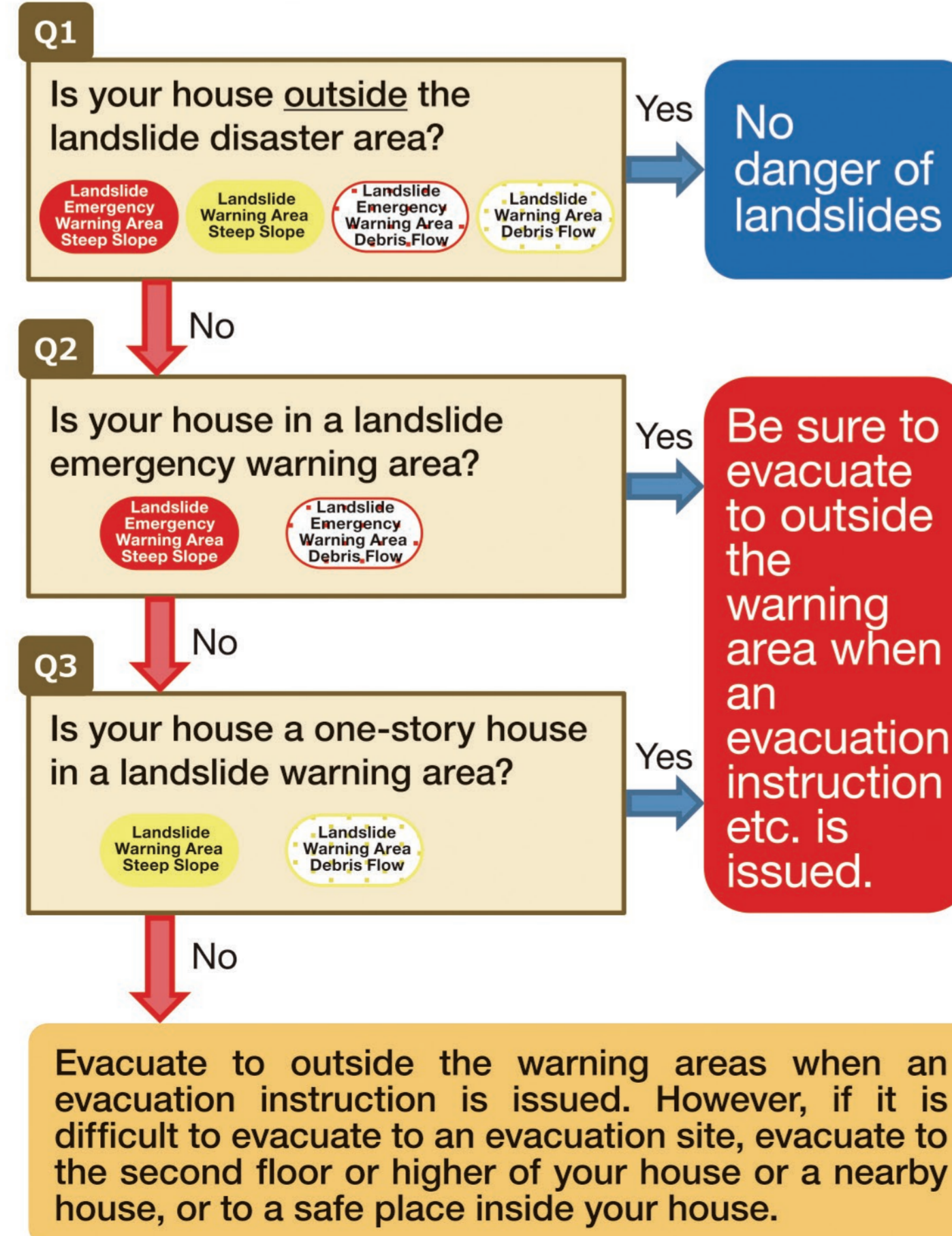


Mie Prefectural Landslide Disaster Information System
<https://www.sabo.pref.mie.jp/MapForm.aspx?m=2>



Evacuation flow for landslide disasters

See the map to check the danger level of your home.



Flood

(Inundation, Bank Erosion)

This is what happens near rivers during floods

Roads and embankments along rivers are destroyed during floods.



Roads can be completely washed away.

If you live in bank erosion areas or along a river, you should not stay in your home during floods.



Please refer to the Mie Prefecture website for information on expected inundation areas.

URL : https://www.pref.mie.lg.jp/KASEN/HP/84459046892_00002.htm



Flood evacuation flow

See the map to check the danger level of your home.

